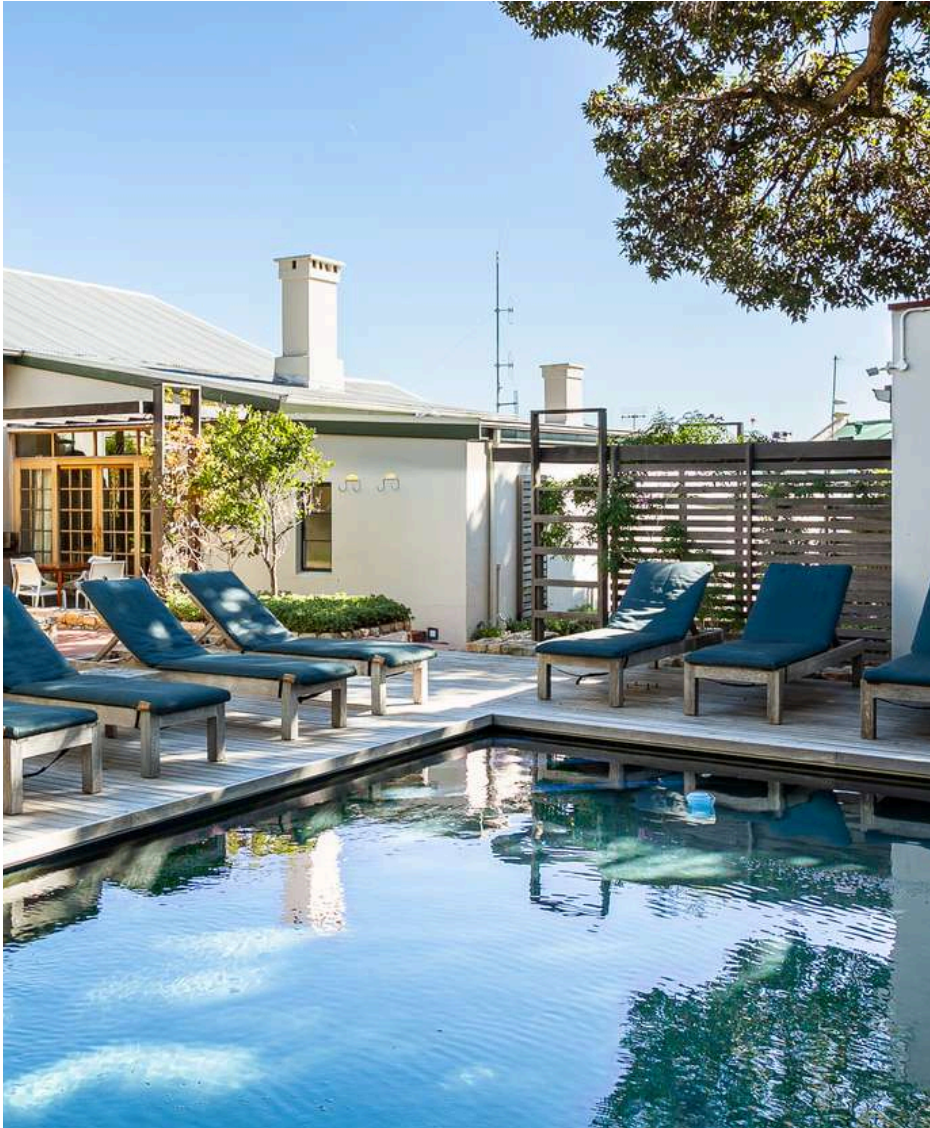


# STONE COTTAGE 5

32 CAMPS BAY DRIVE - CAMPS BAY



This studio boasts an airy and light interior, big sash sliding doors opens up onto exclusive sun decks. Overlooking the magnificent walkway gardens, it offers a glimpse of the Twelve Apostles mountain range.

Guests enjoy direct access to the pool deck and solar heated swimming pool.

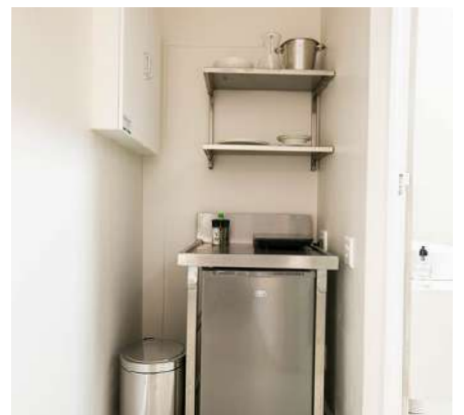
1 Bedroom | 1 Bathrooms | 16 m2

VILLAGE N LIFE

MT004\_CBV\_PMF\_STONE 5\_150524 

# STONE COTTAGE 6

32 CAMPS BAY DRIVE - CAMPS BAY



This studio boasts an airy and light interior, big sash sliding doors opens up onto exclusive sun decks. Overlooking the magnificent walkway gardens, it offers a glimpse of the Twelve Apostles mountain range.

Guests enjoy direct access to the pool deck and solar heated swimming pool.

1 Bedroom | 1 Bathrooms | 16 m2

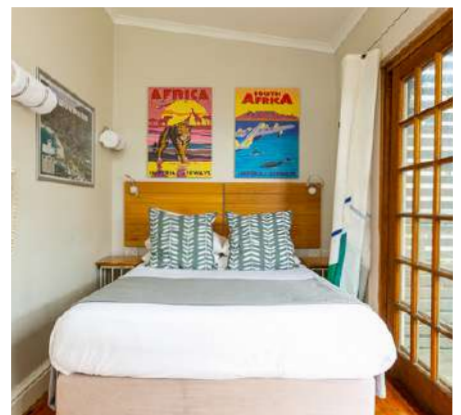
VILLAGE N LIFE

MT003\_CBV\_PMF\_STONE 6\_150524



# STONE COTTAGE 7

32 CAMPS BAY DRIVE - CAMPS BAY



This studio boasts an airy and light interior, big sash sliding doors opens up onto exclusive sun decks. Overlooking the magnificent walkway gardens, it offers a glimpse of the Twelve Apostles mountain range.

Guests enjoy direct access to the pool deck and solar heated swimming pool.

1 Bedroom | 1 Bathrooms | 16 m2

VILLAGE N LIFE



MT003\_CBV\_PMF\_STONE 7\_150524

# STONE COTTAGE 8

32 CAMPS BAY DRIVE - CAMPS BAY



This studio boasts an airy and light interior, big sash sliding doors opens up onto exclusive sun decks. Overlooking the magnificent walkway gardens, it offers a glimpse of the Twelve Apostles mountain range.

Guests enjoy direct access to the pool deck and solar heated swimming pool.

1 Bedroom | 1 Bathrooms | 14 m2

VILLAGE N LIFE



MT003\_CBV\_PMF\_STONE 8\_130524

# STONE COTTAGE 10

32 CAMPS BAY DRIVE - CAMPS BAY



This tastefully renovated studio is located at the back of Stone Cottages and has a separate room to the kitchenette and bathroom. Overlooking the magnificent walkway gardens, it offers a glimpse of the Twelve Apostles mountain range.

Guests enjoy direct access to the pool deck and solar heated swimming pool.

1 Bedroom | 1 Bathrooms | 19 m2

VILLAGE N LIFE



MT003\_CBV\_PMF\_STONE 10\_150524